



INTERNATIONAL
SOURCE FOR
ERGONOMICS

A  COMPANY

Ergonomic Products

Desktop Solutions • Monitor Arms • Keyboard Solutions • CPU Holders

The Right Answer

The Right Answer is the solution that works as hard as you do. We make products that solve problems with precision and excellence. Our products are solutions.

ISE is in the business of motion, we're always moving forward and making products that move and move well. They are designed to help organize, customize and provide solutions for your work environment.

We've created a multi-level program with The Right Answer for you.



INTERNATIONAL
SOURCE FOR
ERGONOMICS

A  COMPANY

Desktop Sit-Stand Workstations	Volante™ Volante HD42 Volante HD42 Bundle	4
Dual Arm Mechanisms	7080 Series - Long Neck Arm 7090 Series - Short Neck Arm	5
Monitor Arms	Single Screen Dual Screen	6
Monitor Lift	Presto Monitor Trim-Lift Monitor Lift Options	7
Monitor Arm Accessories	Accessories	7
Sit-Stand Keyboard Arms	Sit-Stand Arms Sit-Stand Arms with Tray Combos	8
Classic Keyboard Arms	Classic Arms Classic Arms with Tray Combos	8
Performance Keyboard Arms	Performance Arms Performance Arms with Tray Combos	9–10
Value Arms	Value Arms Value Arms with Tray Combos	11–12
Keyboard Trays & Mouse Supports	Standard Keyboard Trays with Mouse Supports Full-Width Keyboard Trays & Mouse Supports Standard Trays (No Mouse Support)	13–14
Keyboard Tray Accessories	Mouse Supports Palm Rests	14–15
Specialty Products & Accessories	Corner Maker Ergo Accessories	15
Custom Component Guide	Which Arm is Right for You? Choose Your Keyboard Platform	16
Keyboard Drawers	Keyboard Drawers	17
CPU Holders	Fixed Mount Storable Lockable	18

Desktop Sit-Stand Workstations

The Volante™ comes pre-assembled, just take it out of the box and place it where you want to work, it fits easily onto a 24" deep desk. The gas assisted height adjustment is smooth, quiet and accommodates most people with the primary work surface extending 20" above the desk with an infinite height range of 13.8". Join the sit-stand revolution and stand up!

Volante Desktop Sit-Stand Workstation

- Primary work surface can extend 20" above the desk
- Gas assisted infinite height adjustment range of 13.8"
- Large primary work surface, fits 2 x 24" monitors ISE monitor arms, Apple iMac or laptop with monitor
- Grommet hole for monitor arm or cable management
- 20° keyboard surface tilt, -10°/+10° for ergonomic typing
- Clip-on mouse fence and cable manager
- Supports 35 lbs. of technology
- Fits onto a 24" deep desk
- Ships fully assembled
- Two year warranty

5230B01

Black

5230Y01

White

Shown with optional
Concerto 78255



Volante HD42 Desktop Sit-Stand Workstation

- Primary work surface can be extended 20" above the desk
- Gas assisted single paddle infinite height adjustment range of 13.8"
- 42" large primary work surface, fits 2 x 27" monitors ISE monitor arms, Apple iMac or laptop with monitor
- Three grommet holes for monitor arm or cable management
- 20° keyboard surface tilt, -10°/+10° for ergonomic typing
- Clip-on mouse fence and cable manager
- Supports 45 lbs. of technology
- Fits onto a 24" deep desk
- Ships fully assembled
- Two year warranty

5230B000042

Black

Volante HD42 Desktop Sit-Stand Workstation / Dual Monitor Arm Bundle

- Volante HD42 & dual monitor arm under one SKU
- Primary work surface can be extended 20" above the desk
- Gas assisted single paddle infinite height adjustment range of 13.8"
- Dual monitor arm for 2 x 27" monitors, combined weight of 17.6 lbs.
- 45°/-45° tilt, 180° rotation, 19.6" arm extension, 17.7" height adjustment and cable clips
- Three grommet holes for monitor arm or cable management
- 20° keyboard surface tilt, -10°/+10° for ergonomic typing
- Clip-on mouse fence and cable manager
- Supports 35 lbs. of technology including monitor arm
- Fits onto a 24" deep desk
- Two year warranty

5230B002042

Black



Sit-Stand Desks

Create a sit-stand desk from a standard table. Using our patented spring-brake technology, the Duet Dual Arm mechanism provides split-top sit-stand capabilities with solid lock-up in widths from 23" to 39". Whether mounted directly to the underside of the work surface or on the storable ball bearing glide track, our Duet Dual Arm Series provides great functionality and excellent stability on a secondary surface.

Dual Arm Mechanisms

- 16.0" and 19.0" height range adjustment for sitting and standing while typing
- Counterbalance is field adjustable by installers for optimized performance
- Compact brake mechanism for heavy loads
- Knob tilt adjustment from +15° / -15°
- Easy-mount keyhole slots on mounting brackets



Duet 7090 Series - Short Neck Arm

Model	Height range Above/Below track	Length	Width
7090D2300	+9.5"/-6.5"	19.7"	23.0"
7090D2700	+9.5"/-6.5"	19.7"	27.0"
7090D3100	+9.5"/-6.5"	19.7"	31.0"
7090D3900	+9.5"/-6.5"	19.7"	39.0"

Duet 7080 Series - Long Neck Arm

Model	Height range Above/Below track	Length	Width
7080D2300	+12.5"/-6.5"	21.1"	23.0"
7080D2700	+12.5"/-6.5"	21.1"	27.0"

Monitor Arms

Free up your desk space with a monitor arm that is made for the flat panel display. Monitor arms can adapt to a wide variety of configurations and applications to help quickly find the ultimate ergonomic position.

Single Screen Monitor Arms



Concerto Monitor Arm

- Single screen, single extension
- Patented Quick-Connect for fast, simple assembly
- 20 lbs load capacity
- Fits 75mm and 100mm hole patterns to comply with VESA standards
- Arm swivels 360°
- Includes clamp & grommet mount

7810S Silver

7810B Black



7818SJ02



7818BJ02

Xtend Monitor Arms

- Single screen, double extension with height-adjustable segment
- 26" of reach with 13" of height adjustment
- Patented Quick-Connect for fast, simple assembly
- Counterbalanced spring technology for 2 to 14 lbs load
- Fits 75mm and 100mm hole patterns to comply with VESA standards
- Pole-less monitor arm folds into a 4-3/8" area
- Clamping range of 0" to 2-5/8" (clamp)
- Arm swivels 360°

7818SJ02 Silver

7818BJ02 Black

Dual Screen Monitor Arms

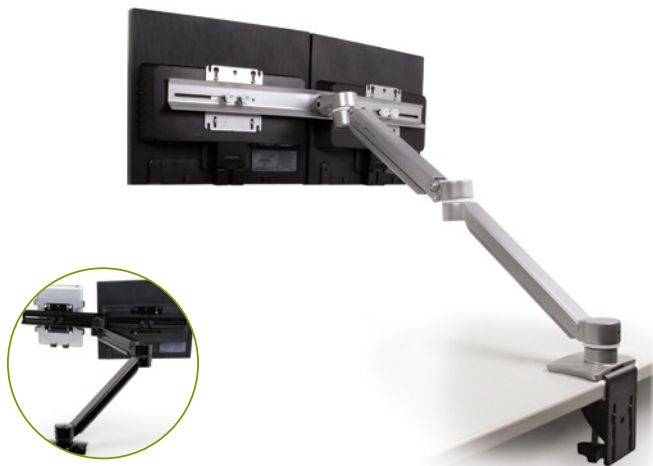


Xtend Dual Monitor Arms

- Dual screen, dual extension with height-adjustable segment
- Counterbalanced spring technology for a 2 to 14 lbs load
- Fits 75mm and 100mm hole patterns to comply with VESA standards
- Pole-less monitor arm folds into a 4-3/8" area
- Clamping range of 0" to 2-5/8" (clamp)
- Arm swivels 360°

7823SJ05 Silver

7823BJ05 Black



Xtend Dual Monitor Arms with Cross Bar

- Dual screen, dual extension cross bar with height-adjustable segment
- Counterbalanced spring technology supports two monitors for a 2 to 20 lbs combined load
- Provides 26" of reach with 13" of usable height adjustment
- Dual crossbar holds monitors up to 22" horizontal width each
- Pole-less monitor arm folds into a 4-3/8" area
- Clamping range of 0" to 2-5/8" (clamp)
- Arm swivels 360°

7822SJ02 Silver

7822BJ02 Black

Presto Monitor Trim-Lift

- In-desk pop-up monitor mechanism
- Ideal for any size monitor up to 14 lbs
- Six VESA mounting positions accept 75mm x 75mm and 100mm x 100mm screen mounting patterns
- Optional universal swivel adaptor providing screen tilt, swivel and rotation (part number 9805C)
- Five 1 lb weights are provided to counterbalance from 9 to 14 lbs

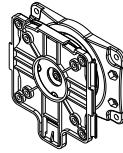
9810D2600

Presto Options

Monitor Mount: Universal Swivel Adapter

- Optional universal swivel adaptor for multiple angle options
- Provides 15° of motion in all directions

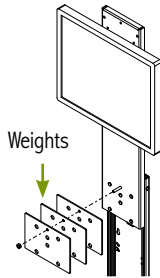
9805C



Counter Balance Weights

- 3 x 2 lbs optional counterweight kit
- Adjustments to weights provide counterbalance control when opening & closing

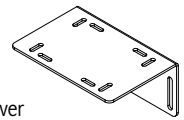
9801A



"L" bracket

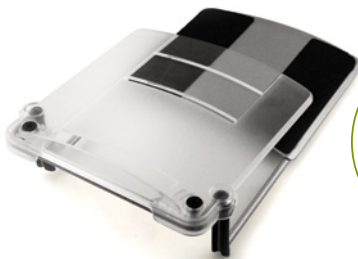
- Optional top cover "L" bracket with slotted holes for adjustment
- Easy installation and adjustments of table cover

9801B



Monitor Arm Accessories

Minimize neck, back and shoulder stress with these ergonomic monitor accessories.



Laptop Support with Document Holder

- Holds your laptop in place and off the work surface
- Fits most laptop brands
- Use with Xtend dual monitor arms

7801TDS

Silver



Concerto Accessory, Document Holder

- Supports various document widths
- Fits both VESA 75mm and 100mm hole pattern
- Use with any Concerto or Xtend monitor arm

7902S

Silver



Quick-Connect Adapter Bracket

- Easily attach bracket to the back of a monitor then "snap" it into the monitor head
- To remove the monitor press & release the tab
- Fits both VESA 75mm and 100mm hole patterns
- Use with Xtend monitor arm

7903K

Sit-Stand Arms

The original Sit-Stand Arms have been redesigned to provide better ergonomic support for both seated and standing positions. The new design builds on that ergonomic comfort by moving the user closer to the work surface.



Momentum Sit-Stand Arm

- Momentum sit-stand arm with 21 3/4" glide track
- Height range 8.3" above track to -5.9" below track
- Patented spring-assisted Lift-n-Lock™ braking mechanism
- Tilt adjustment from +10° to -15°, with positive tilt lockout option
- 360° swivel, with dual swivel option (8400DS)

8478D21



Momentum Sit-Stand Arm / Abs Keyboard Tray

- 8478D21 (See Left) Momentum sit-stand arm with 21 3/4" glide track
- 6421D (See page 12) ABS Keyboard tray with slide-through mouse
- For right- or left-hand mousing

8478D2101



Momentum Sit-Stand Arm / Comfort Keyboard Tray

- 8478D21 (See Left) Momentum sit-stand arm with 21 3/4" glide track
- PF1824-MPS (See page 12) Comfort keyboard tray with mouse over platform & palm rest
- For right- or left-hand mousing

84782118

Classic Keyboard Arms

Built to withstand the kind of heavy workouts associated with your work day. Arms fully articulate with both independent height and tilt adjustment which lets you adjust the keyboard into a variety of comfortable positions.



Classic Lever Lock Arm

- Height range 0.1" above track to -5.7" below track
- Tilt adjustment latch on front of arm unlocks +15° to -10° tilt
- Lever lock adjustment arm
- 360° swivel at track
- 17" ball bearing track

6170D



Classic Star Wheel Arm

- Height range 0.5" above the track to -5.3" below the track
- Tilt adjustment latch on front of arm unlocks +15° to -10° tilt
- Star wheel adjustment arm
- 360° swivel at track
- 17" glide track

5930D



Classic Lever Lock Arm / ABS Keyboard Tray

- 6170D (see Left) Classic arm with lever lock
- 6421D (See page 12) ABS keyboard tray with slide-through mouse
- For right- or left-hand mousing

61701664



Classic Star Wheel Arm / ABS Keyboard Tray

- 5930D (see Left) Classic arm with star wheel
- 6421D (See page 12) ABS keyboard tray with slide-through mouse
- For right- or left-hand mousing

5930CA

Performance Keyboard Arms

Ergonomics is all about comfort and control. A keyboard system should be comfortable, offer better, healthier working position options, and move smoothly and intuitively.



Tenor® Trackless Keyboard Arm

- Height range 5.73" (-1.25" to -6.98" under the desk surface)
- Soft Touch Knob Dial Tilt with +10° to -15° tilt angles
- Patented spring-assisted Lift-n-Lock™ system (no knobs or levers)
- Direct mount, no track required
- 360° swivel

8482D00 Black
8482YD00 White



Ovation Arm Standard Length - 5 1/2"

- Height range 2.3" above the track to -6.1" below the track
- Patented dial tilt adjustment
- Patented height indicator gauge
- Patented spring-assisted Lift-n-Lock™ system (no knobs or levers)
- 25° tilt range from +10° to -15°, with positive tilt lockout option
- 360° swivel at track, with dual swivel option (8400DS)

8434D17 17" glide track
8434D21 21 3/4" glide track



Ovation Arm Extended Length - 7 1/2"

- Height range 3.5" above the track to -7.3" below the track
- Patented dial tilt adjustment
- Patented height indicator gauge
- Patented spring-assisted Lift-n-Lock™ system (no knobs or levers)
- 25° tilt range from +10° to -15°, with positive tilt lockout option
- 360° swivel at track, with dual swivel option (8400DS)
- 21 3/4" glide track

8424D21

Performance Arms with Tray Combo

ISE offers a comprehensive line of adjustable keyboard arms and tray combos to fit a variety of needs with optimal ergonomic features and adjustments.



Tenor Trackless Keyboard Arm / HDPE Keyboard Tray

- **8482D00** (See page 8) Tenor arm
- **6463A79** HDPE keyboard tray, 19.4" width, 9.4" depth, swivel only mouse tray

84820063A79 Black



Tenor Trackless Keyboard Arm / HDPE Keyboard Tray

- **8482D00** (See page 8) Tenor arm
- **6463A81** HDPE Mini keyboard tray, 19.4" width, 9.4" depth, height adjustable with swivel mouse tray

84820063A81 Black



Ovation Arm / Comfort Keyboard Tray

- **8434D21** (See page 8) Ovation Arm - Standard length with 21 ³/₄" glide track
- **PF1824-MPS** (See page 12) Comfort keyboard tray with mouse over platform & palm rest
- For right- or left-hand mousing

84342118



Ovation Arm / ABS Keyboard Tray

- **8434D17** (See page 8) Ovation arm - Standard length with 17" glide track
- **6421D** (See page 12) ABS Keyboard tray with slide-through mouse
- For right- or left-hand mousing

84341701

Value Keyboard Arms

Entry level arms that provide most of the features available on our main family of arms at an economy price point.



Encore Arm Standard Length - 5 1/2"

- Height range 0.8" above the track to -5.1" below the track
- Tilt range from +16° to -17°
- Star wheel arm to adjust both height and tilt
- 360° swivel at track
- 17" glide track

5500D17



Encore Arm Standard Length - 5 1/2" / Integrated Keyboard Clamp

- Height range 0.8" above the track to -5.1" below the track
- Tilt range from +16° to -17°
- Star wheel arm to adjust both height and tilt
- 360° swivel at track
- 17" glide track
- Integrated keyboard clamp

5535D17



Economy Arm Standard Length - 5 1/2"

- Height range 1.0" above the track to -5.0" below the track
- 30° tilt range from +15° to -15°
- Soft-touch knob to adjust both height and tilt
- Spring-assisted to counterbalance keyboard and tray weight
- 360° swivel at track
- 17" ball bearing track

6733M16

Value Keyboard Arms with Tray Combos



Value Adjustable Keyboard Arm / Comfort Keyboard Tray

- **KV PZ** Comfort Keyboard Tray, molded black plastic resin with textured finish
- 18" track with EZ-Glide system
- Arm & tray only available as SD-1 combo
- Accepts the OMN mousing surface kit (See page 13)

SD-1



Value Adjustable Keyboard Arm / Comfort Keyboard Tray with Palm Rest

- **PZ1824** Comfort Keyboard tray with palm rest, molded black plastic resin with textured finish
- 18" track with EZ-Glide system
- Arm & tray only available as SD-2 combo
- Accepts the OMN mousing surface kit (See page 13)

SD-2



Economy Arm / ABS Keyboard Tray

- Choose either the **6733M16** (See page 10) or the **6733M21**
- **6421D** (See page 12) - ABS Keyboard Tray with Slide-Through Mouse
- Accommodates right- or left-hand mousing

6733M1601A 17" ball bearing track
6733M2101A 21 3/4" ball bearing track

Keyboard Trays with Mouse Support

Select the best design for your individual application. ISE offers a broad range of options with a solution that will work for your specific task, or set of tasks.



HDPE Keyboard Tray / Height-Adjustable, Swivel Mouse Tray

- 1/2" thick HDPE (High Density Polyethylene) with textured finish
- Anti-skid strips on keyboard tray
- Plug-in gel-feel foam palm rest
- Cable manager on mouse tray
- 20.7" width

6460A81



Phenolic Keyboard Tray / Swivel Only Mouse Tray

- Detachable swivel mouse tray for right-and left-hand use
- Anti-skid strips on keyboard tray
- Plug-in foam-gel wrist rest
- Built-in mouse guard with cable management
- Attaches to most ISE keyboard arms
- Graphite grey hides fingerprints, marks and smudges
- 20.7" width

6731D79



Comfort Keyboard Tray With Mouse / Over Platform with Palm Rest

- 1" thick black molded plastic with textured finish
- Removable independent Omni-directional tilting mouse support platform
- Anti-skid strips on keyboard tray
- Removable padded Palm Rest
- Mouse swivels above keyboard
- 20.5" width

PF1824-MPS



ABS Keyboard Tray / Slide-Through Mouse Tray

- Slide mouse tray from side to side for right-and left-hand use
- Comes with anti-skid mat (not shown)
- 21" width

6421D

Full-Width Keyboard Trays & Mouse Support



Full-Width, Phenolic Keyboard & Mouse Platform with Palm Rest

- 1/4" thick phenolic
- One piece construction for keyboard & mouse
- For right- or left-hand mousing
- 25" width

KV PC2524



HDPE Keyboard & Mouse Platform with Palm Rest

- 1/2" thick HDPE (High Density Polyethylene) with textured finish
- Plug-in gel-feel foam palm rest
- For right- or left-hand mousing
- 27" width

6466D



Full-Width, Melamine Keyboard & Mouse Platform with Palm Rest

- 5/8" thick melamine
- One piece construction for keyboard & mouse
- For right- or left-hand mousing
- 25" width

PB2524

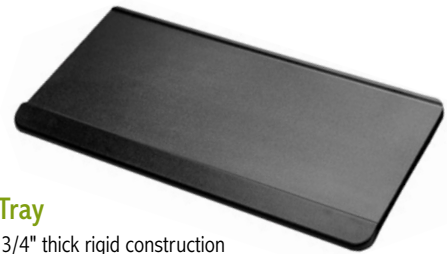
Standard Trays (No Mouse Support)



Comfort Keyboard Tray with Palm Rest

- 20.5" W x 10.5" D x 1" thick black molded plastic resin with textured finish
- Removable padded palm rest included
- Ideal for keyboard only application
- Anti-skid strips on keyboard tray
- Accepts the MPS mousing surface kit

PF1824



ABS Keyboard Tray

- 21" W x 10.5" D x 3/4" thick rigid construction
- Black finish hides fingerprints, marks and smudges
- Anti-skid mat included (not shown)
- 100 lbs load rating

6501D



Comfort Keyboard Tray

- 20.5" W x 10.5" D x 1" thick black molded plastic resin with textured finish
- Ideal for keyboard only applications
- Anti-skid strips on keyboard tray

KV PF



Comfort Keyboard Tray

- 20.5" W x 10.5" D x 1" thick black molded plastic resin with textured finish
- Ideal for keyboard only applications
- Anti-skid strips on keyboard tray
- Accepts the OMN mousing surface kit

PZ1824

Keyboard Tray Accessories

Mouse Supports



Swivel Tilt Mousing Surface Kit

- Simple attachment provides left- or right-mousing
- Omni-direction swivel mechanism with 360° rotation
- Tilting feature
- Built-in mouse fence around platform perimeter
- Fits KV PF & PF1824

MPS



Swivel Only Mousing Surface Kit

- 1/2" thick black HDPE mousing platform
- 9" diameter platform
- Mounting includes bracket for direct attachment to desk
- Mounting hardware included
- Fits SD-1, SD-2 and PZ1824

OMN



Mouse Mat with Built-In Palm Rest

- Lycra covered mousing surface
- 9 1/2" x 7 1/4" mousing area with 6 1/2" x 1 3/4" deep cushioned palm rest
- Built-in mouse fence around platform perimeter of mat
- Fits MPS mousing platform

MP-1



Swivel Only Mousing Surface Kit

- Stamped steel mousing platform
- 9" diameter platform
- Includes mounting spacer stand-off
- Black powder paint finish
- Fits KD-100 keyboard drawer

KD-010

Keyboard Tray Accessories

Palm Rests



Foam Palm Rest

- Black palm rest
- 19.5" x 2.0" x 0.7"
- Use with 6421D and 6501D keyboard trays

6270D



Gel-Feel Palm Rest

- Black Gel-Feel foam palm rest
- Tree lock fasteners, easy install
- Self-skinning molded material with gradual return
- 19.0" x 3.0" x 0.8"
- Use with 6731D79 & 6460A81

6275B



Palm Rest

- Vinyl covered foam filled construction
- Threaded inserts for attachment to tray
- 19.0" x 2.3" x 0.8"
- Fits KV PF Keyboard Tray

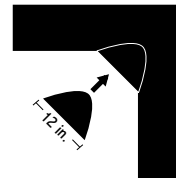
1824WR

Specialty Products & Accessories

Corner Maker

- Converts 90° surfaces to corner work stations
- Fits 1" to 2.25" thick surfaces
- 12" wide for minimum setback from work surface
- Fits all ISE Keyboard systems & adjustable keyboard arms
- Sturdy steel construction with powder coated textured black finish
- Simple installation

KV 179ACD-B



Universal Dual Swivel Adaptor

- Fits all ISE keyboard arms
- Tool-less adjustment tilt and swivel friction is factory set, for easy field adjustments
- 35° of swivel rotation from side to side (70° in total) & 7° (14° in total) of lateral tilt
- 0.9" high

8400DS



Document Holder

- Magnetic line guide
- Black with opaque line guide
- Steel easel base sits on desktop
- Extra-wide and extra-deep platform
- Versatile angle adjustment with locking lever

C200



Foot Rest

- Folding support legs for tilt angles of 6°, 12°, 16° and 25°
- Anti-fatigue rubber surface on platform
- Platform surface 15.7" W x 10.0" D
- Black with grey accents

C800

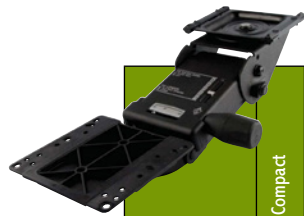


Custom Component Guide

ISE offers individual keyboard arms and platforms to allow customization for your unique application. For builders who make their own hardwood and veneer keyboard surfaces, choose a ISE keyboard arm and create your unique keyboard platform and workstation design. In addition, individual keyboard platforms are offered to allow a quick and easy pick & place offering to mix the keyboard arm and platform to your requirements.

Which Arm Is Right For You?

ISE offers a comprehensive line of adjustable keyboard arms to fit a variety of needs for value as well as optimal ergonomic features and adjustments. This chart will help you identify key features to meet your requirements and select the right adjustable keyboard arm. All arms exceed ANSI/BIFMA standards.



	Compact	Extended Reach	Lift-n-lock™	Tilt Range	Height Range	Above the Track	Below the Track	Track Length
5500D17	•			+16° -17°	5.9"	0.9"	-5.1"	17"
6733M16	•			±15°	6.00"	1.0"	-5.0"	17"
5930D	•			+15° -10°	5.8"	0.5"	-5.3"	17"
6170D	•			+15° -10°	5.8"	0.1"	-5.7"	17"
8434D17	•		•	+10° -15°	8.4"	2.3"	-6.1"	17"
8434D21	•		•	+10° -15°	8.4"	2.3"	-6.1"	21 3/4"
8424D21		•	•	+10° -15°	10.8"	3.5"	-7.3"	21 3/4"
8478D21		•	•	+10° -15°	14.2"	8.3"	-5.9"	21 3/4"
8484D	•		•	+10° -15°	5.73"		-1.25" to -6.98"	

Choose Your Keyboard Platform

Choose the keyboard platform that suits your individual application. Our platforms fit most ISE keyboard arms. Select a platform from this chart and once the keyboard arm is installed, attach your platform and you're off to ergonomic comfort.



	Keyboard Only	Plastic	HDPE	Phenolic	MDF	Width	Depth	Thickness	Padded Palm Rest	Mouse Surface Style
KV PF	•	•				20.5"	10.5"	1.0"		No Mouse Deck
6501D*	•	•				21.0"	10.5"	0.8"		No Mouse Deck
PF1824/PZ1824	•	•				20.5"	10.5"	1.0"	•	No Mouse Deck
6421D*		•				21.0"	10.5"	1.5"	•	Slide-through
6731D79*				•		20.7"	11.00"	0.3"	•	Swivel only
6460A81*			•			20.7"	11.00"	0.5"	•	Height Adjustable Swivel & Tilt
PF1824-MPS						20.5"	10.5"	1.0"	•	Swivel & Tilt
PB2524					•	25.2"	10.5"	0.6"	•	Integral
6466D*			•			27.0"	11.0"	0.5"	•	Integral
KV PC2524				•		25.0"	10.1"	0.3"	•	Integral

Keyboard Drawers

An economical storage solution for your keyboard and mousing applications. Just as every user is different, choosing the right keyboard drawer can maximize a user's productivity for a healthy work environment.



Light Duty Keyboard Drawer - Front Storage

- Molded plastic 20.5" W x 16.0" D
- Precision ball bearing slides with detent feature
- Adjustable drop height slide brackets
- Seven height adjustments of 2.3" to 3.6"
- 20 lbs load rating

KD-75



Keyboard Drawer - Adjustable Palm Rest

- Steel keyboard tray 21.8" W x 18.0" D
- Height-adjustable palm rest for typing comfort
- Precision ball bearing slides with detent feature
- Adjustable drop height slide brackets
- Designed for all keyboard sizes
- 75 lbs load rating

5700SP BLK 18



Keyboard Drawer - Adjustable Palm Rest & Storage

- Steel keyboard tray 21.8" W x 18.0" D
- Height-adjustable palm rest for typing comfort
- Precision ball bearing slides with detent feature
- Adjustable drop height slide brackets
- Large keyboard drawer area for all keyboard size
- 75 lbs load rating

5710SP BLK 18



Hide & Slide Tray - Palm Rest Storage & Mouse Tray

- Tray 21.9" W x 10.6" D for standard and ergonomic shaped keyboards
- Two low friction 16.0" ball bearing slides for storage below work surface
- Pull out mouse tray (mountable left or right)
- Palm rest / pencil and pen compartment
- 100 lbs load rating

C400

CPU Holders

A CPU Holder is a great way to free up your desk space. It mounts easily to the underside of the work surface and keeps the CPU cleaner by getting it off the floor.



Lockable CPU Holder

- Plastic side clamp with bumpers
- Tamper-proof locking nut
- Adjustable width (3.5" to 9.3") and height (14.5" to 22.5")
- 17" glide track
- 360° swivel

7361D



Storable CPU Holder

- Plastic side clamp with bumpers
- Adjustable width (3.5" to 9.3") and height (14.5" to 22.5")
- 17" glide track
- 360° swivel

7351D



Fixed Mount CPU Holder

- Plastic side clamp with bumpers
- Adjustable width (3.5" to 9.3") and height (14.5" to 22.5")
- Non-swivel, non-storable

7301D



Storable CPU Holder - Double Strap

- Retracts on a 17" glide and swivels to allow full accessibility and easy storage
- For CPU's weighing up to 30 lbs and measuring 64" in perimeter
- Soft touch anti-slip pad

7325D17



Storable CPU Holder - Single Strap

- Retracts on a 17" glide and swivels to allow full accessibility and easy storage
- For CPU's weighing up to 30 lbs and measuring 64" in perimeter
- Soft touch anti-slip pad

7322D17



Fixed Mount Economy CPU Holder

- Adjustable, vertical or horizontal position
- Adjustable width (5.5" to 9.8") and height (15.5" to 20.0") vertical configuration
- Adjustable width (13.8" to 18.8") and height (7.3" to 11.3") horizontal configuration
- Non-swivel, non-storable

C730