



INTERNATIONAL  
SOURCE FOR  
ERGONOMICS

A  COMPANY

# Electric Data Beam

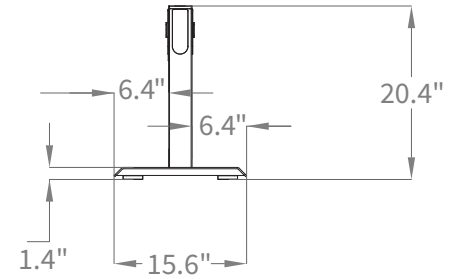
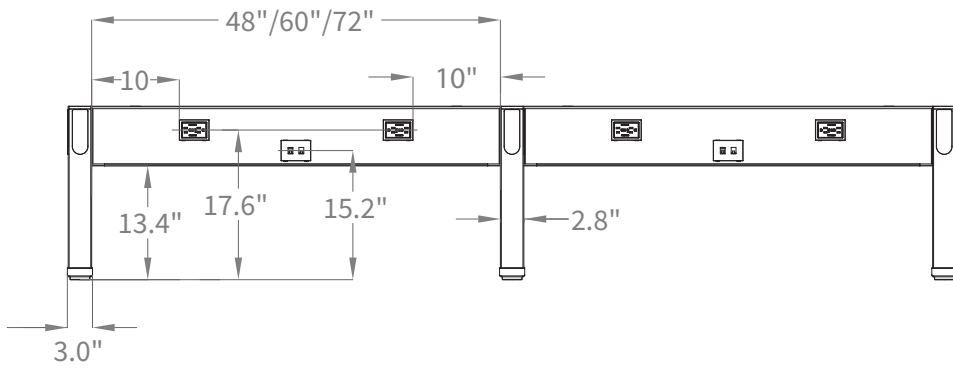


## Specifications

- Up to four 120 V A/C receptacles per seat
- Up to two Cat6/RJ45 intranet outlet provisions per seat (Receptacles not included)
- Industry standard 8 wire/2+2 electrical system design
- Isolated Ground configurable for circuits C & D
- Title 24 Energy Efficiency Controlled Circuit configurable
- Available in Silver, Black, or White
- Powder coated steel construction
- Certified to UL Standard #UL1286 for Power Distribution
- “Liquid Tight” Power Entry option for California and other special power entry requirements
- Power Pole/Power Entry leg option for ceiling power feed
- **US National Electrical Code** allows up to 16 each A/C simplex receptacles per dedicated 20 A, 120 V A/C circuit
  - 1, 2, or 4 circuit 20 A 120 V A/C configuration options
  - Up to 4 seats per power entry with 1 dedicated 20 A, 120 V A/C circuit (Not Title 24 Compliant)
  - Up to 8 seats per power entry with 2 dedicated 20 A, 120 V A/C circuits (Can be Title 24 Compliant)
  - Up to 16 seats per power entry with 4 dedicated 20 A, 120 V A/C circuits (Can be Title 24 Compliant)
- **Canadian Electrical Code** allows up to 12 each A/C simplex receptacles per dedicated 15 A, 120 V A/C circuit
  - 1, 2, or 4 circuit 20 A 120 V A/C configuration options
  - Up to 3 seats per power entry with 1 dedicated 15 A, 120 V A/C circuit (Non-Title 24 Compliant)
  - Up to 6 seats per power entry with 2 dedicated 15 A, 120 V A/C circuits (Can be Title 24 Compliant)
  - Up to 12 seats per power entry with 4 dedicated 15 A, 120 V A/C circuits (Can be Title 24 Compliant)

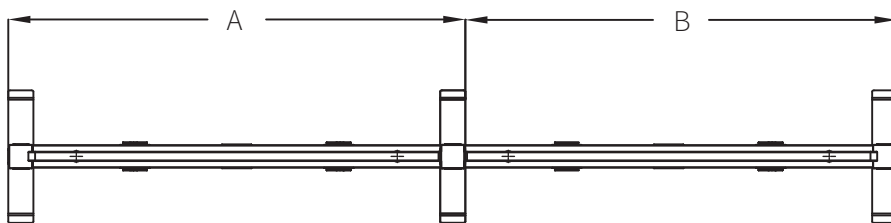
# Electric Data Beam Dimensions

## Beam Widths

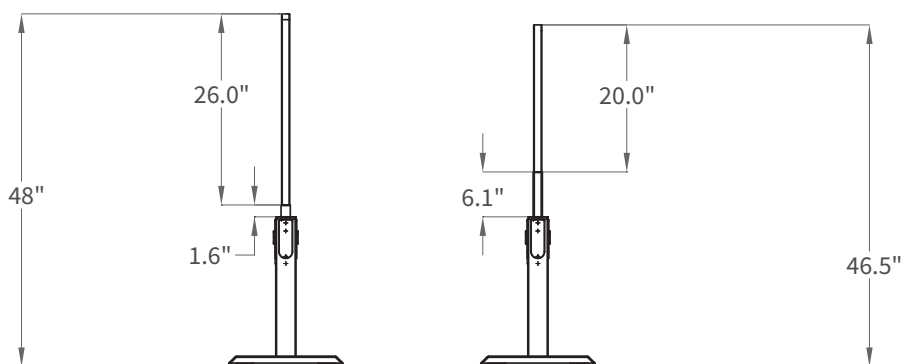


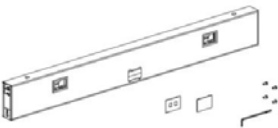
## Overall Widths

BEAM WIDTH	1 <sup>ST</sup> Beam	Additional Beam
	A	B
48"	53.7"	50.7"
60"	65.7"	62.7"
72"	77.7"	74.7"

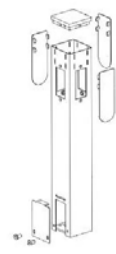


## Actual Height with Divider




Power Beams	Description	Model
	48" Wide Power Beam Assembly	EDB-48BEAM-X
	60" Wide Power Beam Assembly	EDB-60BEAM-X
	72" Wide Power Beam Assembly	EDB-70BEAM-X

Finish: **S:** Silver, **B:** Black, **W:** White

Power Beam Legs	Description	Model
<b>Power Beam 90° Square Leg</b> 	90° Square Leg Assembly Kit (1 Each) • (up to 4-way, 90° connection applications, order foot separately)	EDB-LEG-4W-X


Finish: **S:** Silver, **B:** Black, **W:** White

<b>Power Beam 120° Triangular Leg</b> 	120° Triangular Leg Assembly Kit (1 Each) • (up to 3-way, 120° connection applications, includes foot)	EDB-LEG-120-X
--	---	---------------


Finish: **S:** Silver, **B:** Black, **W:** White

### Power Beam Power Pole

Power Pole/Leg installs on beam in place of standard leg. Allows power to run from the ceiling into the power beam. Four-way connection design allows pole to be placed into the power beam in virtually any position of a layout.

Power Beam Power Pole & Foot	Description	Model
<b>Power Beam 90° Square Power Pole</b> 	12' Tall 2-Piece 90° Square Power Pole Assembly Kit (1 Ea) • (Creates ceiling feed with up to 4 way 90° connection applications, order foot separately)	EDB-PPOLE-4W-X

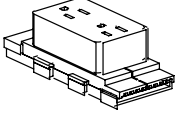
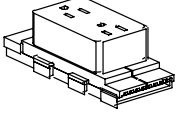
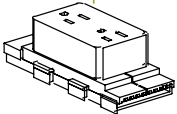

Finish: **S:** Silver, **B:** Black, **W:** White

<b>Power Beam Foot</b> 	T-Foot Assembly Kit (1 Ea) • (Universal T-Foot for Standard leg and Power Pole applications)	EDB-TFOOTKIT-X
--	---	----------------

Finish: **S:** Silver, **B:** Black, **W:** White

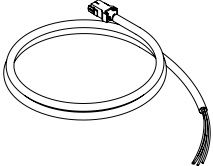
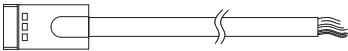
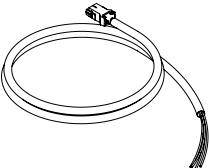
## Power Receptacles

Power Receptacles are designed to function as an industry standard 2+2 power system. Simple conventional 4 circuit, isolated ground, and Title 24 configurations are easily configured from the options listed below. We recommend pairing A+C for 2 circuit applications and A+C and B+D for 4 circuit applications.

Power Receptacles	Description	Model
<b>Power Beam Standard Power Receptacles</b> 	Standard Duplex Receptacle Circuit A	EDB-STD-DUPLEX-A-X
	Standard Duplex Receptacle Circuit B	EDB-STD-DUPLEX-B-X
<b>Power Beam Isolated Power Receptacles</b> 	Isolated Ground Duplex Receptacle Circuit C	EDB-ISO-DUPLEX-C-X
	Isolated Ground Duplex Receptacle Circuit D	EDB-ISO-DUPLEX-D-X
<b>Power Beam Isolated Title 24 Power Receptacles</b> 	Title 24 Isolated Ground Duplex Receptacle Circuit C	EDB-ISO-T24-DUPLEX-C-X
	Title 24 Isolated Ground Duplex Receptacle Circuit D	EDB-ISO-T24-DUPLEX-D-X
<b>Power Beam Jumper/Connector Cable</b> 	Power Beam Jumper Cable 21" Connects power between beams after power entry	EDB-JUMPER-21

## Power Beam Power Entry Cables

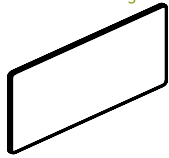
Power Entry cable option offered for the Power Beam support the most popular and typical requirements to meet electrical needs. Floor or wall entry can be accommodated by the Standard Flex Conduit Power Entry or when required with the Liquid Tight Conduit Power Entry. In addition, the Power Pole Power Entry include the length needed to connect from the ceiling into the Power Beam system.

Power Beam Power Entry Cables	Description	Model
<b>Standard Flex Conduit Hardwire Power Entry</b> 	Hardwire Power Entry Cable 72" Standard Metal Flex Conduit length with extra wire length beyond conduit for easy electrical connection	EDB-PWRIN-72-X  Finish: <b>S:</b> Silver, <b>B:</b> Black, <b>W:</b> White
<b>Liquid Tight Conduit Hardwire Power Entry</b> 	Liquid Tight Conduit Hardwire Power Entry Cable 72" Liquid Tight Flex Conduit length with extra wire length beyond conduit for easy electrical connection	EDB-PWRIN-LT72-X  Finish: <b>S:</b> Silver, <b>B:</b> Black, <b>W:</b> White
<b>Power Pole Flex Conduit Hardwire Power Entry</b> 	Power Pole Flex Conduit Hardwire Power Entry Cable 144" Standard Metal Flex Conduit length with extra wire length beyond conduit for easy electrical connection	EDB-PWRIN-144

## Power Beam Divider Panels & Mount Kits

Fabric Divider Panels mount to the top of the Power Beam using the Divider Mount Kits. Divider Panels create privacy and divider to the rear of workstations using the Power Beam. Panels reduce sound transfer as well as provide a tackable surface.

Power Beam Divider Panels & Mount Kits	Description	Model
20"H for 2-Stage Height Adjustable Tables	Divider Panel 46"W × 20"H	EDB-PPNL46-20-XX
	Divider Panel 58"W × 20"H	EDB-PPNL58-20-XX
	Divider Panel 70"W × 20"H	EDB-PPNL70-20-XX



**Color:** **BB:** Beach Beige, **PG:** Pebble Gray, **SG:** Storm Gray, **NB:** Night Blue

Divider Mount Kit	Description	Model
	20" Divider Mount Kit	EDB-DIVMNT20-KIT-X

**Finish:** **S:** Silver, **B:** Black, **W:** White

26"H for 3-Stage Height Adjustable Tables	Description	Model
	Divider Panel 46"W × 26"H	EDB-PPNL46-26-XX
	Divider Panel 58"W × 26"H	EDB-PPNL58-26-XX
	Divider Panel 70"W × 26"H	EDB-PPNL70-26-XX

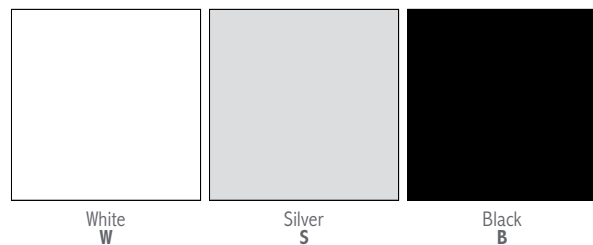
**Color:** **BB:** Beach Beige, **PG:** Pebble Gray, **SG:** Storm Gray, **NB:** Night Blue

Divider Mount Kit	Description	Model
	26" Divider Mount Kit	EDB-DIVMNT26-KIT-X

**Finish:** **S:** Silver, **B:** Black, **W:** White

## Metal Finish Options

ISE uses high quality VOC-free electro-static powder coating.



## Textile Surface Options

Applies to: Power Beam—Divider Panels (20" & 26")

